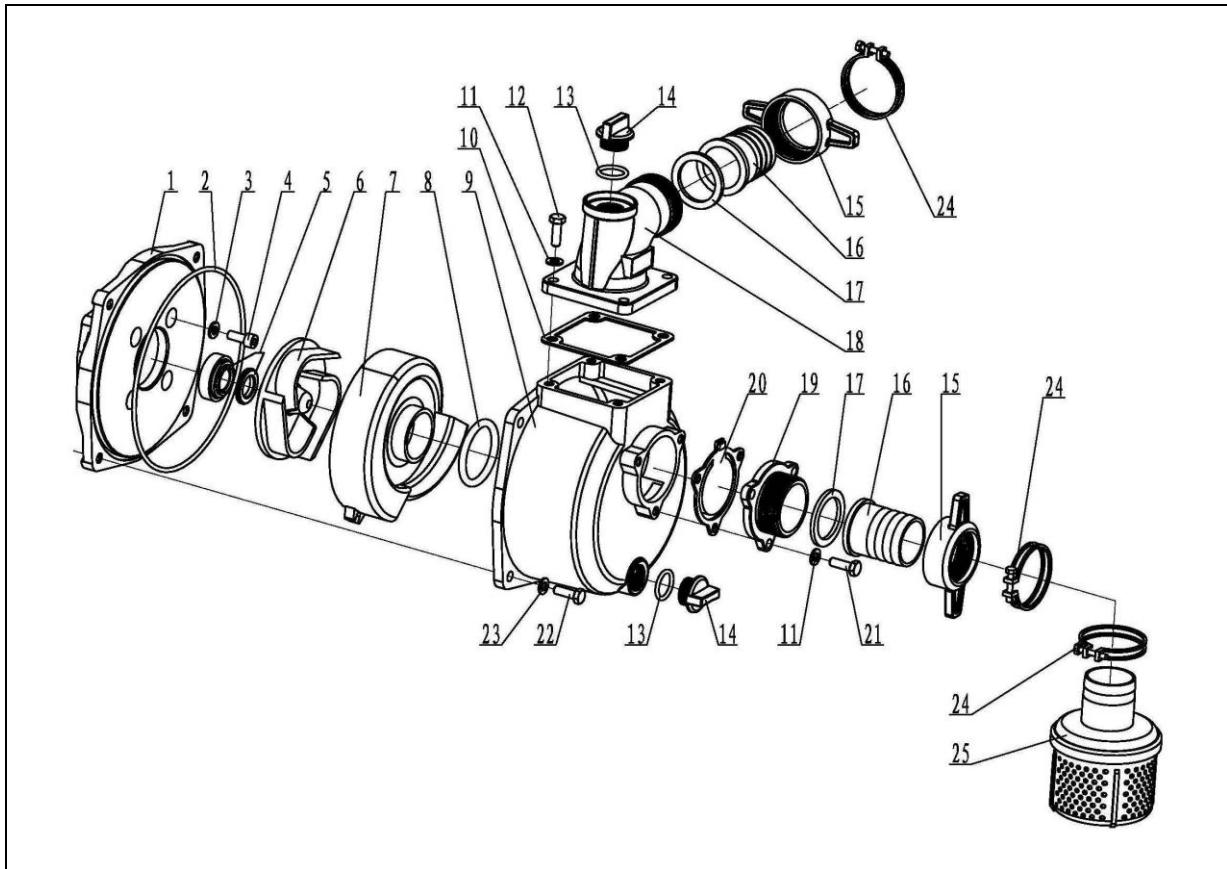


## WP30A Pumps Sketch map



| NO . | Name                      | Material | Quantity | NO . | Name                      | Material | Quantity |
|------|---------------------------|----------|----------|------|---------------------------|----------|----------|
| 1    | Pump cover                | ZL102    | 1        | 13   | O ring<br>23.6x3.55       | NBR      | 2        |
| 2    | O ring                    | NBR      | 1        | 14   | Whorl Plug                | ABS      | 2        |
| 3    | Sealed washer             | PA       | 4        | 15   | Spanner                   | ABS      | 2        |
| 4    | Hexangular bolt           | Q235     | 4        | 16   | Pipe                      | ABS      | 2        |
| 5    | Mechanical seal           |          | 1        | 17   | sealed washer             | NBR      | 2        |
| 6    | Impeller                  | HT150    | 1        | 18   | Outlet flange             | ZL102    | 1        |
| 7    | Diffuser                  | ZL102    | 1        | 19   | Inlet flange              | ZL102    | 1        |
| 8    | O ring<br>53x7            | NBR      | 1        | 20   | Check valve               | NBR      | 1        |
| 9    | Pump body                 | ZL102    | 1        | 21   | Hexangular bolt<br>M10x20 | Q235     | 3-4      |
| 10   | Outlet's sealed washer    | NBR      | 1        | 22   | Hexangular bolt<br>M8x25  | Q235     | 4        |
| 11   | Washer                    | Q235     | 7-8      | 23   | Washer                    | Q235     | 4        |
| 12   | Hexangular bolt<br>M10x25 | Q235     | 4        | 24   | clamp                     |          | 3        |
|      |                           |          |          | 25   | Strainer                  |          | 1        |