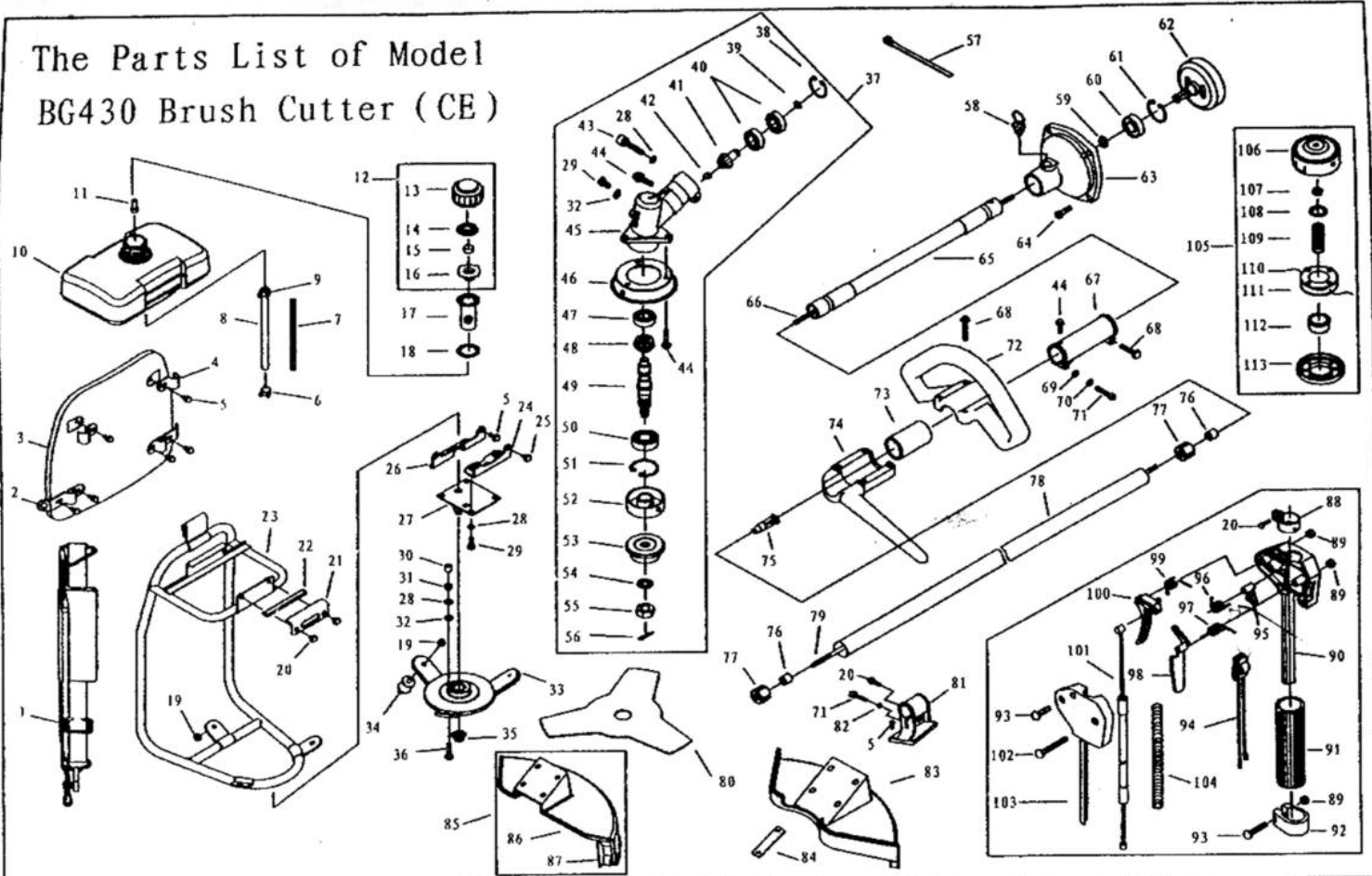


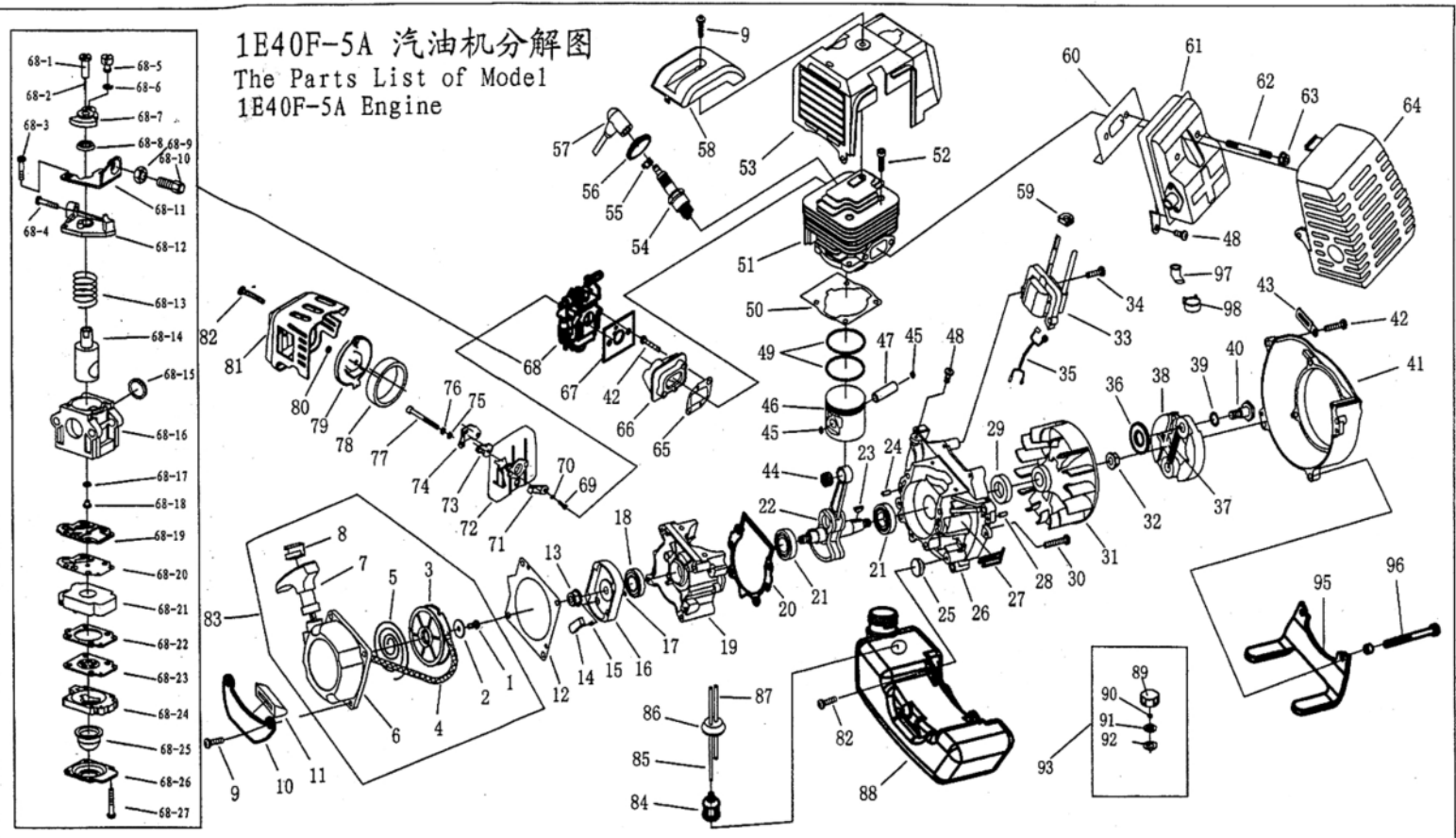
# The Parts List of Model BG430 Brush Cutter (CE)



NO.	PART NO.	PART NAME	QTY.	NO.	PART NAME	QTY.	NO.	PART NO.	PART NAME	QTY.
1	BG430. 1. 4	SHOULDER BELT ASS'Y	1	39	GB/T894. 1	1	77	BG-328. 9. 4-5	RUBBER COVER	6
2	BG305-1	HOLDER, LOWER	2	40	GB/T276	2	78	BG415-CE. 1-1	ALUMINIUM PIPE	1
3	BG305. 7	SHOULDER PLATE COMP.	1	41	CG305F. 1-2	1	79	BG305. 12. 2-2	DRIVE SHAFT	1
4	BG305-2	HOLDER, UPPER	2	42	CG415. 3-1	1	80	CG420-2	BLADE	1
5	GB/T9074. 4	SCREW M5 × 16	12	43	GB/T 70. 1	1	81	CG330B-CE. 1. 3	HOLDER ASS'Y	1
6	BG415-8	FUEL PIPE CLIP	1	44	GB/T9074. 4	6	82	GB/T848	WASHER 5	1
7	BG430. 1-1	SPRING	1	45	BG305. 12. 4-4	1	83	CG330B-CE. 1-1	SAFETY GUARD	1
8	BG430. 1-2	FUEL PIPE	1	46	BG305. 12. 4-9	1	84	CG330B-CE. 1. 1	BACKING BOARD COMP.	2
9	3WF-3-3	CLIP	1	47	GB/T276	1	85	CG330B-CE. 2. 1	SAFETY GUARD COMP.	1
10	BG305. 10-1	FUEL TANK	1	48	BG328. 9. 5-2	1	86	CG330B-CE. 2. 1-1	SAFETY GUARD	1
11	ZB4-6-1-1-00	FILTER NET	1	49	CG305F. 1-1	1	87	CG330B-CE. 2. 1-2	BLADE	1
12	BG305. 10. 2	FUEL TANK LID ASS'Y	1	50	GB/T276	1	88	CG305F. 13. 2	CLAMP	1
13	BG305. 10. 2-1	FUEL TANK LID	1	51	GB/T893. 2	1	89	GB/T889	NUT M5	3
14	BG305. 10. 2-3	PLASTIC INNER LID	1	52	BG305. 12. 4-5	1	90	CG305F. 13-4	BOX, RIGHT	1
15	BG-328. 7-4	FILTER CORE	1	53	CG305F. 1-3	1	91	CG305F. 13-6	RUBBER COVER	1
16	BG305. 10. 2-2	RUBBER INNER LID	1	54	GB/T862. 1	1	92	CG305F. 13-5	CLAMP	1
17	BG305. 10. 1	FILTER NET CASTING	1	55	CG305F. 1-4	1	93	GB/T9074. 4	SCREW M5 × 25	2
18	BG305. 10-2	WASHER	1	56	GB/T91	1	94	BG430A. 1. 2	STOP SWITCH	1
19	GB/T6177	NUT M6	12	57	BG415-1	2	95	CG305F. 13-10	TINE	1
20	GB/T9074. 1	SCREW M5 × 12	3	58	BG305. 2. 1	1	96	CG305F. 13-11	SPRING	1
21	BG415. 1-1	FRONT CLAMP	1	59	GB/T894. 1	1	97	CG305F. 13-9	SPRING	1
22	BG305. 9-2	RUBBER WASHER	2	60	GB/T 276	2	98	CG305F. 13-8	SAFETY LEVER	1
23	BG430. 1. 1. 1	SHOULDER FRAME COMP.	1	61	GB/T893. 1	1	99	CG305F. 13-1	SPRING	1
24	BG430. 1. 2. 1	FRONT SUPPORT COMP.	1	62	BG-328. 8. 1	1	100	CG305F. 13-2	THROTTLE LEVER	1
25	GB/T9074. 4	SCREW M5 × 20	2	63	BG430. 2. 1-1	1	101	BG430A. 1. 1	CABLE COMP.	1
26	BG430. 1. 2. 3	BACK SUPPORT COMP.	1	64	GB/T9074. 13	4	102	GB9074. 4	SCREW M5 × 35	1
27	BG430. 1. 2. 2	ENGINE BASE COMP.	1	65	BG305. 1. 2	1	103	CG305F. 13-3	BOX, LEFT	1
28	GB/T93	WASHER 6	6	66	BG305. 1. 1	1	104	BG430A-1	TUBE	1
29	GB/T29. 2	BOLT M6 × 12	5	67	BG305D-2	1	105	CG305F. 8	NYLON CUTTER HEAD	1
30	BG430. 1. 3-1	TUBE	1	68	GB/T9074. 4	5	106	CG305F. 8. 1	CASE	1
31	GB6170	NUT M6	1	69	GB/T97. 1	2	107	CG305F. 8-4	LEFT NUT A	1
32	GB97. 1	WASHER 6	2	70	GB/T93	2	108	CG305F. 8-5	WASHER	1
33	BG430. 1. 3. 1	DOWN BASE	1	71	GB/T70. 1	2	109	CG305F. 8-3	SPRING	1
34	BG415. 4	CUSHION RUBBER COMP.	3	72	BG330-CE. 1-1	1	110		CORD	2
35	GB/T6177	NUT M10	1	73	BG330-CE. 1-2	1	111	CG305F. 8-1	CORD HOLDER	1
36	GB/T9074. 3	SCREW M6 × 30	1	74	BG330-CE. 1. 1	1	112	CG305F. 8-7	COVER	1
37	BG305. 12. 4	GEAR CASE ASS'Y	1	75	BG-328. 9. 4-1	1	113	CG305F. 8-2	COVER	1
38	GB/T893. 2	STOP RING 26	1	76	BG-328. 9. 4-4	6				

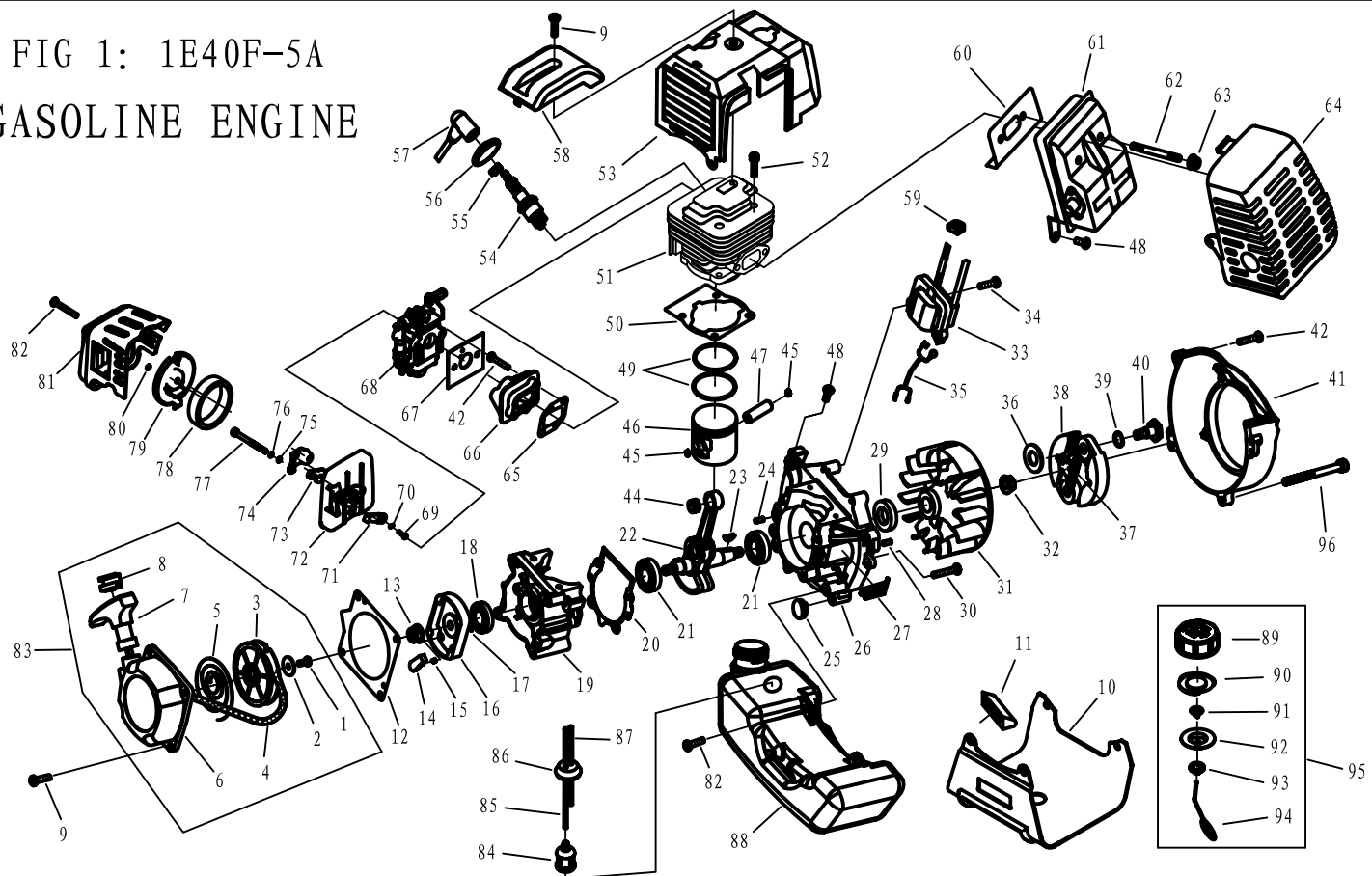
# 1E40F-5A 汽油机分解图

## The Parts List of Model 1E40F-5A Engine



序号 NO.	代号 Part No.	名称 Part Name	数量 Qty.	序号 NO.	代号 Part No.	名称 Part Name	数量 Qty.	序号 NO.	代号 Part No.	名称 Part Name	数量 Qty.	序号 NO.	代号 Part No.	名称 Part Name	数量 Qty.
1	GB67	螺钉M5×12-9.8-DZ Screw M5×12-9.8-DZ	1	31		电磁机转子 Fly Wheel	1	61	1E40F-5.2	消音器组 Muffler	1	68-23		吸油膜片部件 Diaphragm	1
2	1E40F-5.11-2	平垫圈 Washer	1	32	GB6177	螺母 M8 Nut M8	1	62	1E40F-5-13	消音器连接螺栓 Bolt	2	68-24		下体部件 Body Purge	1
3	1E40F-5.11-1	启动滑轮 Start Rope Reel	1	33	1E40F-5.3	电磁机定子 Stator	1	63	GB6177	螺母 M6 Nut M6	2	68-25		油杯 Pump Priming	1
4		启动拉绳 Rope	1	34	GB9074.13	螺栓组合件M5×20 Bolt M5×20	2	64	1E40F-5-7	消音器护罩 Muffler Cover	1	68-26		F压板 Cover Pump	1
5	1E40FP-3Z.4-7	平卷弹簧 Recoil Spring	1	35	1E40F-5.3.1	停车线圈 Cord Comp.	1	65	1E40F-5-2	进气管 Admitting Pipe	1	68-27	GB/T818	螺钉 M3×22 Screw M3×22	4
6	1E40F-5.11.1	启动器罩壳组合 Start Cover Ass'y	1	36	1E36F-3	垫圈B Washer B	2	66	1E40F-5A.2	进气管 Admitting Pipe	1	69	GB845	自攻螺钉ST2.9×6.5 Screw ST2.9×6.5	1
7	1E40FP-3Z.4-2	启动器手柄 Start Handle	1	37	1E40F-5.6-1	拉簧 Spring	1	67	1E40F-5A-1	化油器密封垫 Gasket	1	70	GB97.1	垫圈 3 Washer 3	1
8	1E40FP-3Z.4-10	增强套 Ring	1	38	1E40F-5.6.1	涨紧块 Expander	2	68	1E40F-5A.8	化油器 Carburetor	1	71	1E40F-5A.1.1-1	阻风门手柄 Choke Handle	1
9	GB9074.4	螺钉组合件M5×20 Screw M5×20	5	39	1E40F-5-11	波形垫圈 Washer	2	68-1		主量针套 Thimble	1	72	1E40F-5A.1.1.1	空滤器内罩 Inside Cover	1
10	1E40F-5A-4	油箱挂架 Stand	1	40	1E40F-5-12	螺钉轴 Screw Pin	2	68-2		主量针 Main Needle	1	73	1E40F-5A.1.1-2	阻风门 Choke	1
11	1E40F-5A-2	橡胶套 Rubber Cover	1	41	1E40F-5-9	电磁机罩壳 Fan Cover	1	68-3		油门调节螺钉 Screw	1	74	1E40F-5A.1.2	挡油板焊合 Baffle	1
12	1E40F-5-10	启动器垫 Gasket	1	42	GB9074.13	螺栓组合件M5×25 Bolt M5×25	6	68-4	GB/T823	螺钉 M3×10 Screw M3×10	2	75	GB97.1	垫圈5 Washer 5	2
13	GB6170	螺母 M8 Nut M8	1	43	1E40F-3A.9	高压线卡 Clip	1	68-5		挂线轴 Swivel	1	76	GB93	垫圈5 Washer 5	2
14	1E46FP.4-2	启动爪 Start Claw	1	44	1E40F-5.4-2	小头滚针轴承 Bearing	1	68-6	GB896	开口挡圈 3.5 Ring 3.5	1	77	GB/T70.1	滤芯 Filter Net	1
15	1E36F.1.2-2	启动扭簧 Start Spring	1	45	1E40F-03.02.01	活塞环挡环 Ring	2	68-7		旋架 Turn Frame	1	78	1E34F.1-1	空滤器内盖 Inside Cover	1
16	1E40F-5.7-1	启动拨盘 Start Reel	1	46	1E40F-5.4-1	活塞 Piston	1	68-8		密封圈 Airproof Ring	1	79	1E40F-5A.1-2	空滤器外罩 Outside Cover	1
17	GB896	挡圈 4 Stop Ring 4	1	47	1E46FP.6-3	活塞销 Piston Pin	1	68-9	GB/T6172	螺母 M6 Nut M6	1	80	GB3452.1	O形圈 3.15×1.8 O-Washer 3.15×1.8	1
18	1E36F.2	小油封 Oil-seal	1	48	GB9074.4	螺栓组合件M5×12 Bolt M5×12	3	68-10		挂线调节螺母 Nut, Adjuster	1	81	1E40F-5A.1-1	空滤器外罩 Outside Cover	1
19	1E40F-5.8-2	后半曲轴箱 Crank Case	1	49	1E40FP-3Z.3-5	活塞环 Piston Ring	2	68-11		上压板 Bracket	1	82	GB9074.4	螺钉组合件M5×16 Screw M5×16	3
20	1E40F-5.8-4	曲轴箱密封垫 Gasket	1	50	1E40F-5-6	缸垫 Gasket	1	68-12		固定板 Fixed Board	1	83	1E40F-5.11	启动器 Starter	1
21	GB/T276	轴承 6202/P4 Bearing 6202/P4	2	51	1E40F-5-4	缸体 Cylinder	1	68-13		扭簧 Spring	1	84	1E34F.9.2-3	燃油过滤器 Cleaner Cover	1
22	1E40F-5.4.1	曲轴连杆组 Crank Shaft	1	52	GB70	螺钉M5×20 Screw M5×20	4	68-14		柱塞 Column	1	85	1E40F-5A.4.2-2	输油管 Fuel Pipe	1
23	GB1099	半圆键 3×13 Key 3×13	1	53	1E40F-5.5	缸体护罩组合 Guide Cover Ass'y	1	68-15		密封垫 Ring	1	86	1E36FF.8.1-1	油管胶塞 Plug	1
24	GB119	销 B5×12 Pin B5×12	2	54	L6 (LD)	火花塞 Spark Plug	1	68-16		上本体 OverBody	1	87	1E40F-5A.4.2-1	回油管 Fuel Pipe	1
25	1E40F-5A.4.2-1	橡胶垫 Rubber Washer	2	55		火花塞簧 Spring	1	68-17		O形圈 O Ring	1	88	1E40F-5A.4.1	油箱 Fuel Tank	1
26	1E40F-5.8-1	前半曲轴箱 Crank Case	1	56		高压帽护套 Plug Cap	1	68-18		主量孔 Pinhole	1	89	EB-415.4.1-1	油箱盖 Fuel Tank Lid	1
27	1E40F-5.8-3	防护罩 Guide Cover	1	57		高压帽 Cap	1	68-19		中体密封片 Gasket, Pump	1	90	EB-415.4.1.1-1	进气嘴 Stand	1
28	GB119	销 B4×10 Pin B4×10	2	58	1E40F-5-8	上压盖 Cover	1	68-20		中体膜片 Diaphragm, Pump	1	91	EB415.4.1.1-2	密封垫 Airscop	1
29	1E40F-5.9	大油封 Oil-seal	1	59	1E40F-5.3-1	胶塞 Plug	1	68-21		中体部件 Mid-body	1	92	EB415.4.1.1-3	进起嘴支架 Stand	1
30	GB9074.4	螺钉组合件M5×30 Screw M5×30	4	60	1E40F-5-5	消音器垫 Gasket	1	68-22		下体密封片 Gasket Diaphragm	1	93	EB415.4.1	油箱盖组合 Lid Ass'y	1

FIG 1: 1E40F-5A  
GASOLINE ENGINE



NO.	Part No.	Part Name	Qty.	NO.	Part No.	Part Name	Qty.	NO.	Part No.	Part Name	NO.
1	GB/T67	Screw M5 × 12-9.8	1	33		Coil	1	66	1E40F-5A.2	Admitting Pipe	1
2	1E40F-5.11-2	Washer	1	34	GB/T9074.13	Bolt M5 × 20	2	67	1E40F-5A-1	Gasket	1
3	1E40F-5.11-1	Start Rope Reel	1	35	SG230-2B	Cord Comp.	1	68	1E40F-5A.8A	Carburetor	1
4		Rope	1	36	1E36F-3	Washer B	2	69	GB/T845	Screw ST2.9 × 6.5	1
5	1E40FP-3Z.4-7	Recoil Spring	1	37	1E40F-5.6-1	Spring	1	70	GB/T97.1	Washer 3	1
6	1E40F-5.11.1	Start Cover Ass'y	1	38	1E40F-5.6.1	Expander	2	71	1E40F-5A.1.1-1	Choke Handle	1
7	1E40FP-3Z.4-2	Start Handle	1	39	1E40F-5-11	Washer	2	72	1E40F-5A.1.1.1	Inside Cover	1
8	1E40FP-3Z.4-10	Ring	1	40	1E40F-5-12	Screw Pin	2	73	1E40F-5A.1.1-2	Choke	1
9	GB/T9074.4	Screw M5 × 20	5	41	1E40F-5-9	Fan Cover	1	74	1E40F-5A.1.2	Bufler	1
10	BG520A.1A.2	Stand	1	42	GB/T9074.13	Bolt M5 × 25	4	75	GB/T97.1	Washer 5	2
11	1E40F-5A-2	Rubber Cover	1	44	1E40F-5.4-2	Bearing	1	76	GB/T93	Washer 5	2
12	1E40F-5-10	Gasket	1	45	1E40F-03.02.01	Ring	2	77	GB/T70.1	Screw M5 × 55	2
13	GB/T6170	Nut M8	1	46	1E40F-5.4-1	Piston	1	78	1E34F.1-1	Filter Net	1
14	1E46FP.4-2	Start Claw	1	47	1E46FP.6-3	Piston Pin	1	79	1E40F-5A.1-2	Inside Cover	1
15	1E36F.1.2-2	Start Spring	1	48	GB/T9074.4	Bolt M5 × 12	3	80	GB/T3452.1	O-Washer 3.15 × 1.8	1
16	1E40F-5.7-1	Start Reel	1	49	1E40FP-3Z.3-5	Piston Ring	2	81	1E40F-5A.1-1	Outside Cover	1
17	GB/T896	Stop Ring 4	1	50	1E40F-5-6	Gasket	1	82	GB/T9074.4	Screw M5 × 16	3
18	1E36F.2	Seal	1	51	1E40F-5-4	Cylinder	1	83	1E40F-5.11	Starter	1
19	1E40F-5.8-2	Crank Case	1	52	GB/T70	Screw M5 × 20	4	84	1E34F.9.2-3	Cleaner Cover	1
20	1E40F-5.8-4	Gasket	1	53	1E40F-5.5	Guide Cover Ass'y	1	85	1E40F-5A.4.2-2	Fuel Pipe	1
21	GB/T276	Bearing 6202/P5	2	54	L6 (LD)	Spark Plug	1	86	1E36FF.8.1-1	Plug	1
22	1E40F-5.4.1	Crank Shaft	1	55		Spring	1	87	1E40F-5A.4.2-1	Fuel Pipe	1
23	GB/T1099	Key 3 × 13	1	56		Plug Cap	1	88	1E40F-5A.4.1	Fuel Tank	1
24	GB/T119	Pin B5 × 12	2	57		Cap	1	89	1E32FL.6.2-1	Fuel Tank Lid	1
25	1E40F-5A.4.2-1	Rubber Washer	2	58	1E40F-5-8	Cover	1	90	CG420.1.3.1-2	Gasket	1
26	1E40F-5.8-1	Crank Case	1	59	1E40F-5.3-1	Plug	1	91	EB415.4.1.1-1	Inlet	1
27	1E40F-5.8-3	Guide Cover	1	60	1E40F-5-5	Gasket	1	92	1E32FL.6.2-2	Inside Cover	1
28	GB/T119	Pin B4 × 10	2	61	1E40F-5.2	Muffler	1	93	1E32FL.6.2-3	Inside Cover	1
29	1E40F-5.9	Seal	1	62	1E40F-5-13	Bolt	2	94	1E32FL.6.2-4	Chain	1
30	GB/T9074.4	Screw M5 × 30	4	63	GB/T6177	Nut M6	2	95	1E32FL.6.2	Fuel Tank Lid COMP.	1
31		Fly Wheel	1	64	1E40F-5-7	Muffler Cover	1	96	GB/T9074.13	Screw M5 × 25	2
32	GB/T6177.1	Nut M8	1	65	1E40F-5-2	Admitting Pipe	1				