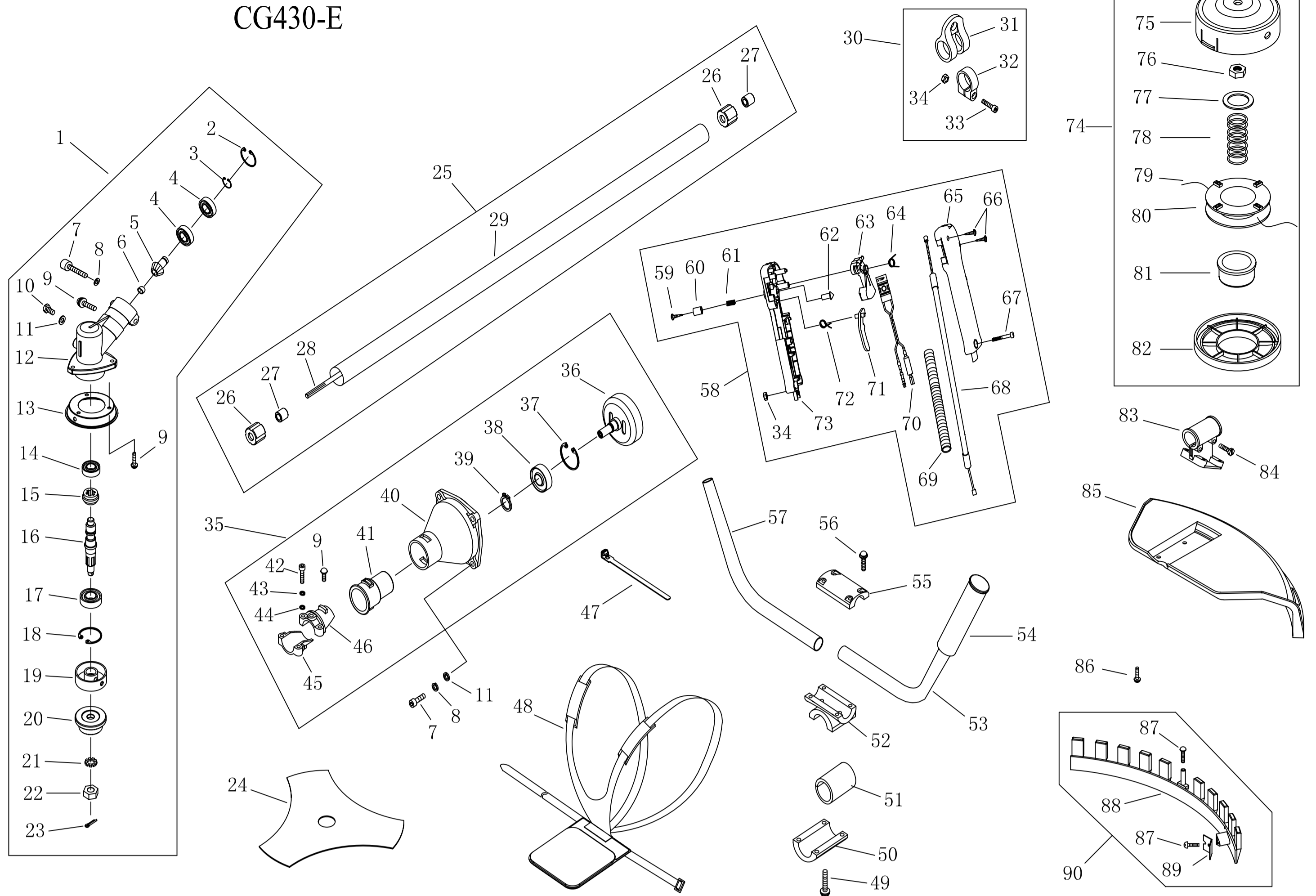


NO.	Part No.	Part Name	Qty.	NO.	Part No.	Part Name	Qty.	NO.	Part No.	Part Name	Qty.	NO.	Part No.	Part Name	Qty.
1	1E36FE. 9-3	Screw	1	32	GB9074. 13	Bolt M5 × 20	2	62	1E40F-E-8	Gasket	1	66	1E34F. 1-2	Choker Handle	1
2	1E36FE. 9-4	Ratchet	1	33	1E36F-3	WasherB	2	63	1E40F-5A. 2	Admitting Pipe	1	67	1E34F. 1-7	Stop ring	1
3	1E36FE. 9-1	Starter Rope Reel	1	34	1E36F-E. 6-1	Spring	1	64	1E40F-E-7	Gasket	1	68	GB/T6170	Nut M4	1
4	1E36FE. 9-5	Starter Rope	1	35	1E40F-5. 6A-1	Expander	2	65	1E40F-E. 1A	Carburetor	1	69	1E34F. 1. 1	Cleaner inside cover	1
5	1E36FE. 9-7	Recoil Spring	1	36	1E40F-5-11	Washer	2	65-1		Thimble	1	70	GB/T9074. 4	Screw M5x50	2
6	1E36FE. 9-8	Starter Cover Ass'y	1	37	1E40F-5-12	Screw Pin	2	65-2		Main Needle	1	71	1E34F. 1-3	Choker	1
7	GB9074. 4	Screw M5 × 20	5	38	1E40F-5-9	Fan Cover	1	65-3		Screw	1	72	GB/T845	Screw ST4. 2X12	1
8	1E40FP-3Z. 4-2	Start Handle	1	39	1E40F-5. 9	Oil-seal	1	65-4	GB/T823	Screw M3 × 10	2	73	1E34F. 1-1	Filter Net	1
9	1E40FP-3Z. 4-10	Ring	1	40	GB9074. 13	Screw M5 × 25	2	65-5		Swivel	1	74	1E36F-E. 7-1	Cleaner Outside Cover	1
10	1E36FE. 9-6	Spring	1	41	1E44F-2A. 2-3	Bearing	1	65-6	GB896	Ring 3. 5	1	75	1E34F. 1. 2	Screw	1
11	1E36FE. 9-2	Start pole	2	42	1E40F-03. 02. 01	Ring	2	65-7		Turn Frame	1	76	1E36F-E-5	Stand	1
12	1E36FE. 9	Starter	1	43	1E40F-E. 4-1	Piston	1	65-8		Airproof Ring	1	77	1E40F-5A-2	Rubber Cover	1
13	1E40F-5-10	Gasket	1	44	1E46FP. 6-3	Piston Pin	1	65-9	GB/T6172	Nut M6	1	78	1E34F. 9. 2-3B	Cleaner Cover	1
14	1E36FE. 7	Start Reel	1	45	1E40FP-3Z. 3-5	Piston Ring	2	65-10		Nut, Adjuster	1	79	1E36FE. 10. 1-2	Fuel Pipe	1
15	1E36F. 2	Oil-seal	1	46	1E40F-E-3	Gasket	1	65-11		Bracket	1	80	1E36FF. 8. 1-1	Plug	1
16	1E40F-E. 6-2	Crank Case	1	47	1E40F-E-1	Cylinder	1	65-12		Fixed Board	1	81	1E36FE. 10. 1-1	Fuel Pipe	1
17	1E40F-5. 8-4	Gasket	1	48	GB/T70. 1	Screw M5 × 20	4	65-13		Spring	1	82	GB/T9074. 4	Screw M5 × 16	2
18	GB/T276	Bearing 6202/P5	2	49	1E40F-E. 5	Guide Cover Ass'y	1	65-14		Column	1	83	1E40F-HS. 5. 1	Fuel Tank	1
19	1E40F-E. 4. 1A	Crank Shaft	1	50	L8RTC	Spark Plug	1	65-15		Ring	1	84	1E32FL. 6. 2-4	Chain	1
20	GB1099	Key 3x5x13	1	51	1E40F-3A. 8-2	Spring	1	65-16		OverBody	1	85	1E32FL. 6. 2-3	End Cover	1
21	GB119	Pin B5 × 12	2	52	1E34F. 5-3	Plug Cap	1	65-17		O Ring	1	86	1E32FL. 6. 2-2	Inside Cover	1
22	1E40F-E. 6-1	Crank Case	1	53	1E34F. 5-2	Cap	1	65-18		Pinhole	1	87	EB-415. 4. 1. 1-1	Inlet	1
23	GB9074. 4	Screw M4 × 8	1	54	1E40F-5. 3-1	Plug	1	65-19		Gasket, Pump	1	88	CG420. 1. 3. 1-2	Gasket	1
24	GB119	Pin B4 × 10	2	55	1E40F-E-4	Cover	1	65-20		Diaphragm, Pump	1	89	1E32FL. 6. 2-1	Fuel Tank Lid	1
25	GB9074. 4	Screw M5 × 30	4	55A	1E36F-2C-1	Gasket	1	65-21		Mid-body	1	90	1E32FL. 6. 2	Lid Ass'y	1
26		MAGNETO ROTOR COMP.	1	56	1E40F-E-2	Gasket	1	65-22		Gasket Diaphragm	1	91	1E40F-5A-3	Rubber washer	2
27	GB/T859	WasherB	1	57	1E40F-E. 2	Muffler	1	65-23		Diaphragm	1	92	1E40F-5A. 3	Stand	1
28	GB/T97. 1	WasherB	1	58	GB9074. 4	Screw M5 × 12	2	65-24		Body Purge	1	93	1E36F-2-10	Label	1
29	GB6170	Nut M8	1	59	1E40F-5-13	Bolt	2	65-25		Pump Priming	1	94	1E40F-E-6	Cover	1
30		IGNITION COIL COMP.	1	60	GB6177. 1	Nut M6	2	65-26		Cover Pump	1	95	GB9074. 13	Screw M5 × 30	2
31	1E36F-2. 3. 1	Cord Comp.	1	61	GB9074. 4	Screw M5 × 25	2	65-27	GB/T818	Screw M3 × 22	4				

BRUSH CUTTER MACHINE SPARE PARTS LIST

CG430-E



NO.	PART NO.	PART NAME	QTY.	NO.	PART NO.	PART NAME	QTY.	NO.	PART NO.	PART NAME	QTY.
1	CG415.3	Gear Case Ass'y	1	32	CG260.3-1	Clamp	1	63	BL750.3-4	Handgrip	1
2	GB/T893.2	Stop Ring 26	1	33	GB/T70.1	Screw M5×20	1	64	BL750.3-1	Spring	1
3	GB/T894.1	Stop Ring 10	1	34	GB/T889.1	Nut M5	2	65	BL750.3-5	Box, Right	1
4	GB/T276	Bearing 6000-2RS/P5	2	35	CG415.2	Clutch Comp.	1	66	GB/T845	Screw ST2.9×18	2
5	CG415D.6-4	Pinion	1	36	CG415D.1.1	Clutch Drum Comp.	1	67	GB/T70.1	Screw M5×30	1
6	CG415.3-1	Steel Plate Cap	1	37	GB/T893.1	Stop Ring 35	1	68	CG260B-CE.1.1.1	Cable Comp.	1
7	GB/T70.1	Screw M6×20	5	38	GB/T276	Bearing 6202-2RS/P5	1	69	BG-328A-2	Tube	1
8	GB/T93	Washer 6	5	39	GB/T894.1	Stop Ring 15	1	70	CG328.2.1	Stop Button Comp.	1
9	GB/T9074.4	Screw M5×12	4	40	CG305F.14-1	Linker	1	71	BL750.3-3	Handgrip	1
10	GB/T29.2	Bolt M6×12	1	41	CG305F.14-2	Rubber Cover	1	72	BL750.3-2	Spring	1
11	GB/T97.1	Washer 6	5	42	GB/T70.1	Screw M5×25	2	73	BL750.3-6	Box, Left	1
12	BG305.12.4-4	Gear Case	1	43	GB/T93	Washer 5	2	74	CG305F.8	Nylon Cutter Head	1
13	BG330H.7.3-1	Blade Cover	1	44	GB/T97.1	Washer 5	2	75	CG305F.8.1	Case	1
14	GB/T276	Bearing 6000/P5	1	45	CG305F.14-3	Clamp B	1	76	CG305F.8-4	Left Nut	1
15	BG-328.9.5-2	Gear	1	46	CG305F.14-4	Clamp A	1	77	CG305F.8-5	Washer	1
16	CG305F.1-1	Gear Shaft	1	47	BG415-1	Wire Clamp Band	2	78	CG305F.8-3	Spring	1
17	GB/T276	Bearing 6002-2RS/P5	1	48	CG260A-CE.1	Harness Ass'y	1	79		Cord	2
18	GB/T893.2	Stop Ring 32	1	49	GB/T9074.4	Bolt M6×25	2	80	CG305F.8-1	Cord Holder	1
19	BG305.12.4-5	Holder A	1	50	CG415D-2	Cap, Lower	1	81	CG305F.8-7	Platen	1
20	CG305F.1-3	Holder B	1	51	CG330B-3	Rubber Washer	2	82	CG305F.8-2	Cover	1
21	GB/T862.1	Washer 10	1	52	CG415D-3	Bracket	1	83	BG430.2.6-1	Bracket	1
22	CG305F.1-4	Left Nut	1	53	CG415D.2-2	Handle	1	84	GB/T9074.13	Screw M5×30	2
23	GB/T91	PIN 2×16	1	54	CG330B-CE.3-1	Grip Left	1	85	CG420.7.1-1	Safety Guard	1
24	CG420-2	Blade	1	55	CG415D-1	Cap, Upper	1	86	GB/T9074.4	Screw M5×16	4
25	CG415-CE.1	Pipe Comp.	1	56	GB/T9074.13	Bolt M5×25	4	87	GB/T845	Screw ST4.2×16	2
26	BG-328.9.4-5	Rubber Cover	6	57	CG411.3-1	Handle	1	88	CG420.7.1.1-1	Guard	1
27	BG-328.9.4-4	Oil-Bearing	6	58	CG260B-CE.1.1	Lever Ass'y	1	89	CG420.7.1.1-2A	Blade	1
28	CG420.2-3	Drive Shaft	1	59	GB/T846	Screw ST2.9×13	1	90	CG420.7.1.1	Guard Ass'y	1
29	CG415-CE.1-1	Pipe	1	60	BL750.3-9	Button	1				
30	CG260.3	Holder Ass'y	1	61	BL750.3-7	Spring	1				
31	CG260.3.1	Harness Clamp	1	62	BL750.3-8	Clock Pin	1				