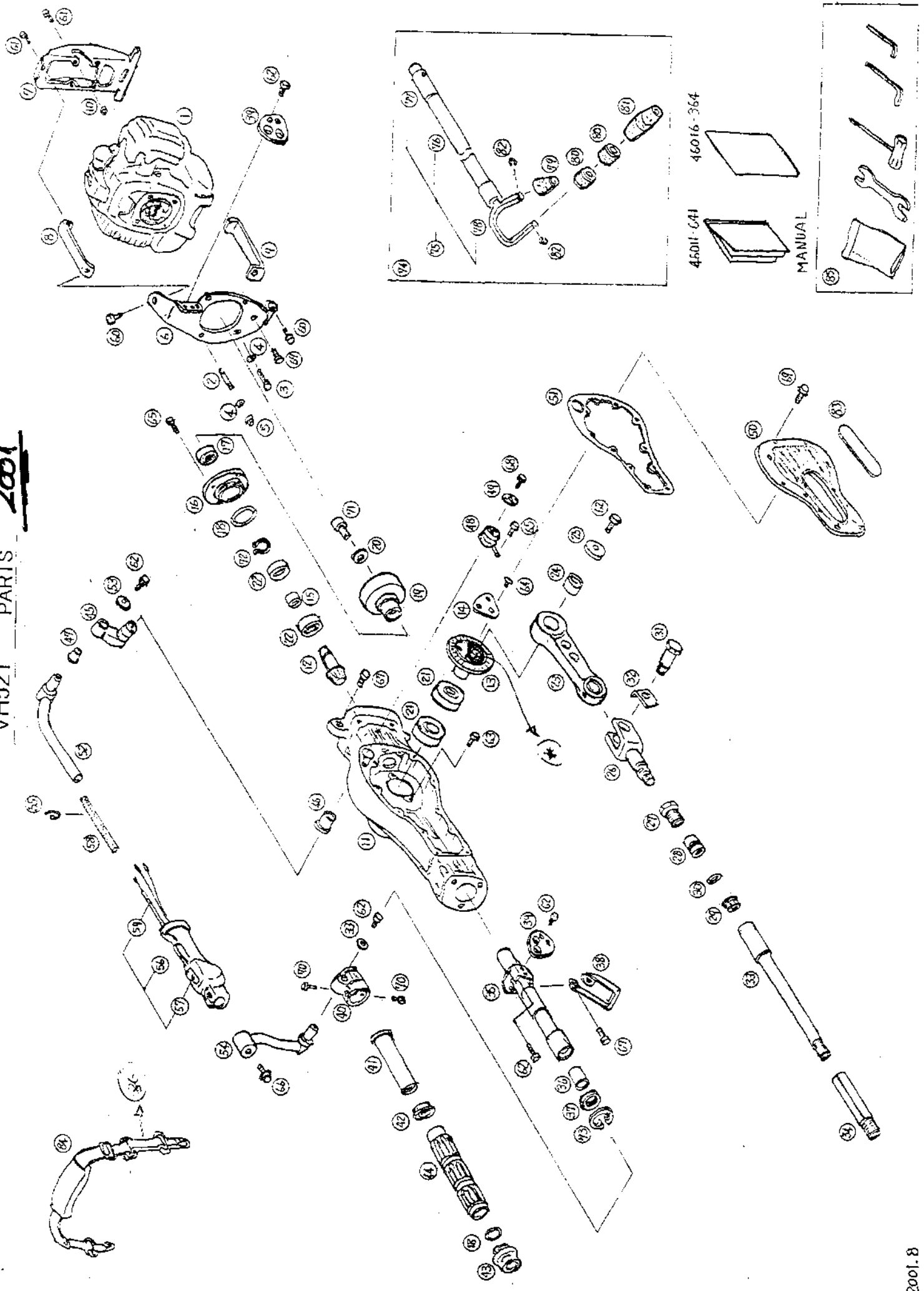


VH521 PARTS 2001



PRATS LIST
MODEL : VH521-11

1/2

Sep. 03, 2001

REF NO.	PARTS NO.		PARTS NAME	Q'TY	PRICE(¥)	RECOMM.(%)		REMARKS
						Lot.100		
1	124042		ENGINE	1				
2	31039	139	STUD	2				
3	31062	165	PRE-COAT LOCK BOLT	2				
4	671U	0600	WASHER	4				
5	583L	0600	CAP NUT FLANGE	2				
6	36068	184	GUARD	1				
7	36068	185	GUARD	1				
8	36068	186	GUARD	1				
9	36068	187	GUARD	1				
10	11083	357	COLLAR	1				
11	51050	118	CRANK CASE	1				
12	78002	182	BEVEL PINION	1				
13	71310	101	BEVEL GEAR C.P.	1				
14	11173	107	WEIGHT	1				
15	11083	358	COLLAR	1				
16	51051	139	BEARING COVER	1				
17	61002	150	OIL SEAL 3x20x7	1	EJC	KAAF	TANDA	35x20x7 (NEW AGE)
18	214B	3500	O-RING	2				
19	11014	218	CLUTCH DRUM C.P.	1				
20	68036	256	WASHER	1				
21	912B	6205	BEARING 6205	2				
22	913B	2602	BEARING 6202	2				
23	51052	117	CON. ROD	1				
24	937B	1816	BEARING	1				
25	68036	257	WASHER	1				
26	91049	125	CONNECTOR	1				
27	31058	165	NUT	1				
28	31058	166	NUT	1				
29	584L	0800	U-NUT	1				
30	211B	1400	O-RING	1				
31	31057	240	BOLT	1				
32	68036	258	WASHER	1				
33	11041	120	PLUNGER	1				
34	66055	148	JOINT	1				
35	11092	114	GUIDE C.P.	1				
36	76007	174	BUSH	1				
37	36072	108	U-PACKING	1				
38	11024	148	STAND	1				
39	51022	174	BRACKET	2				
40	11102	214	HOLDER	1				
41	61023	175	SLEEVE	1				
42	11086	184	STOPPER	1				
43	51088	105	SLIDE METAL	1				
44	91038	124	GRIP	1				
45	71226	125	BRACKET C.P.	1				
46	76007	176	BUSH	1				
47	76007	177	BUSH	1				
48	68013	333	SPRING	1				
49	68036	260	WASHER	1				
50	51054	113	CRANK CASE COVER	1				

PARTS LIST
MODEL : VH521-11

2/2

Sep. 03, 2001

REF NO.	PARTS NO.		PARTS NAME	Q'TY		PRICE(¥)	RECOMM.(%) Lot.100	REMARKS
				INCLUDING				
51	61019	219	PACKING	1				
52	71112	114	HANDLE C.P.	1				
53	68036	259	WASHER	2				
54	71203	129	ARM C.P.	1				
55	68028	103	WIRE BAND	2				
56	71056	241	THROTTLE LEVER A'SSY	1				
57	71148	155	STOP SWITCH A'SSY	1				
58	41003	190	TUBE	1				
59	91001	316	THROTTLE WIRE	1				
60	31062	155	PRE-COAT LOCK BOLT	2				
61	31062	156	PRE-COAT LOCK BOLT	5				
62	31062	157	PRE-COAT LOCK BOLT	8				
63	31062	158	PRE-COAT LOCK BOLT	2				
64	31062	159	PRE-COAT LOCK BOLT	3				
65	31062	160	PRE-COAT LOCK BOLT	6				
66	31062	161	PRE-COAT LOCK BOLT	1				
67	31062	162	PRE-COAT LOCK BOLT	4				
68	31062	163	PRE-COAT LOCK BOLT	4				
69	31062	164	PRE-COAT LOCK BOLT	12				
70	31062	166	PRE-COAT LOCK BOLT	2				
71	31062	167	PRE-COAT LOCK BOLT	1				
72	812V	1500	C-SNAP RING	1				
73	811V	3000	C-SNAP RING	1				
74	71191	103	ROD SET	1				
75	71311	101	ROD C.P.	1				
76	98003	141	MAIN PIPE	1				
77	98012	249	JOINT	1				
78	51044	143	HOOK	1				
79	36006	121	ABSORBER-RUBBER	1				
80	36006	122	ABSORBER-RUBBER	2				
81	36006	123	ABSORBER-RUBBER	1				
82	816V	1000	E-SNAP RING	2				
83	46008	127	LABEL	1				
84	36063	202	SHOULDER BAND	1				
85	71002	322	TOOL SET	1				
86	71133	104	CONCA, CINTURON	2				
87								
88								
89	32021/252		Ext. de la Campana					
90								
91	UTIL VH521		Util. extracción eje				8,57	
92								
93	(*) EJE NO. 521		Eje conca base VH521				14,27	
94								
95	KIT MUELLE		Kit Muelle Composición Muelle				20	
96	GRUE VIBADOR		Tubo grue 402.02				6	
97	UTIL VH52102		Torillo Extracción Campana				8,57	
98								
99	PLANTILLA TALLADO		Plantilla Talleto Kit Muelle				4,29	
100	KIT MUELLE base		Kit Muelle base				33,49	