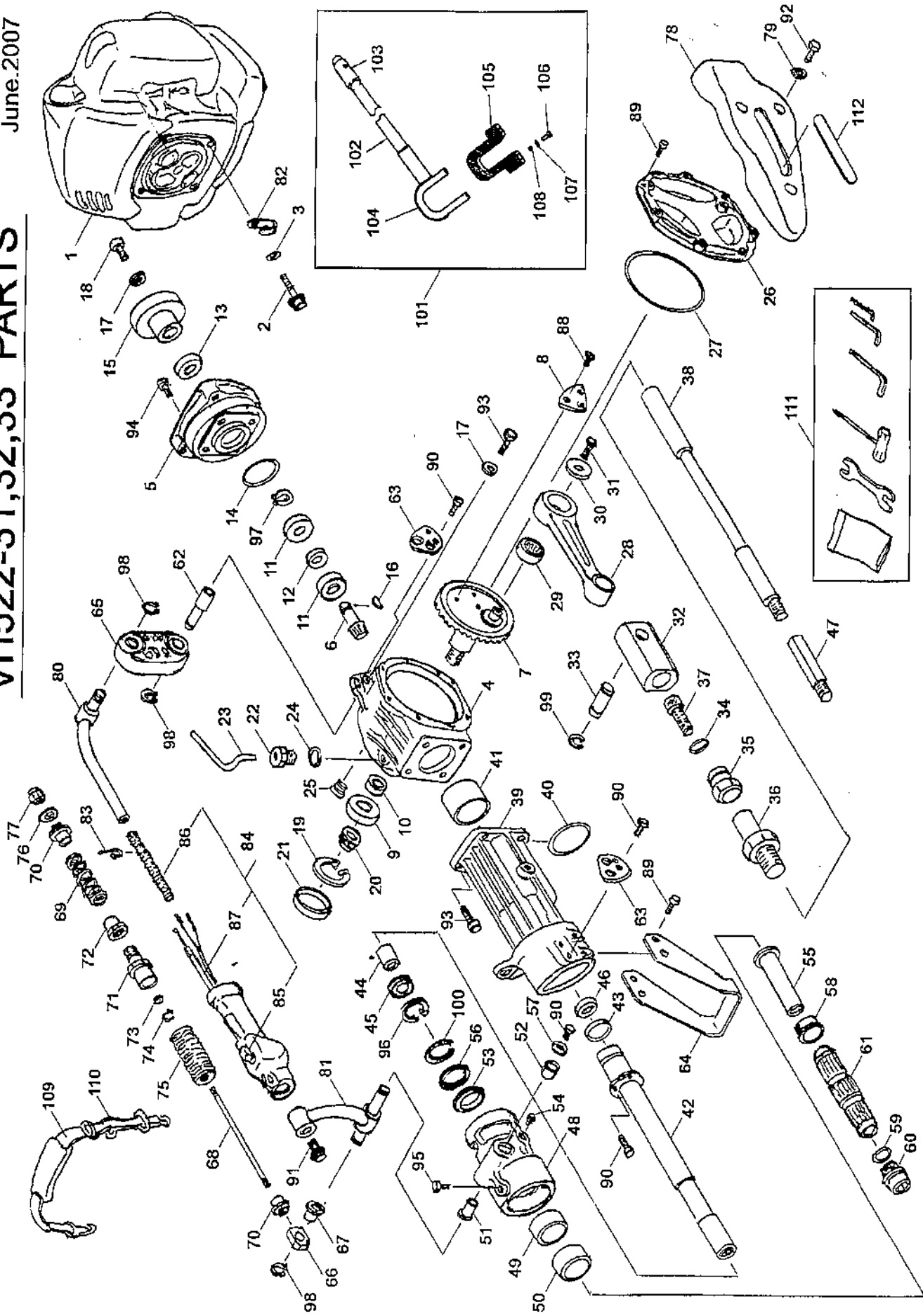


# VH522-31,32,33 PARTS

June.2007



# PARTS LIST

MODEL:VH522-31,32,33

REF. No.	PARTS NO.		PARTS NAME	QTY		PRICE(¥)	1/3	Jun.2007
				INCLUDING			RECOMM.(%) Lot.100	REMARKS
1	124111		ENGINE VIP 52	1				
7	124241		ENGINE STAR 55P	1				
1	124300		ENGINE STAR 55P	1				
2	31062	172	PRE-COAT LOCK BOLT	4				
3	671U	0600	WASHER CONICAL	4				
4	51050	121	17	CRANK CASE	1			
5	51030	197	17	CLUTCH CASE	1			
6	78002	211		BEVEL PINION	1			
7	71310	104		BEVEL GEAR C.P	1			
8	11173	107		WEIGHT	1			
9	913B	6304		BEARING	2			
10	11083	390		COLLAR	1			
11	913B	6202		BEARING	2			
12	11083	358		COLLAR	1			
13	61002	163		OIL SEAL	1			
14	214B	5000		O-RING	1			
15	11014	224		CLUTCH DRAM C.P	1			
16	91020	159		KEY WOODRUFF	1			
17	68036	271		WASHER	1			
18	31062	167		PRE-COAT LOCK BOLT	1			
19	811V	5200		C-SNAP RING	1			
20	584L	1600		U-NUT	1			
21	91033	142		BLIND COVER	1			
22	91043	114		OIL CUP	1			
23	36082	126		TUBE	1			
24	211B	1500		O-RING	1			
25	91025	112		OIL-GAUGE	1			
26	36065	464	17	COVER	1			
27	214B	1250		O-RING	1			
28	51052	118		CONROD	1			
29	965B	183012		BEARING	1			
30	68036	300		WASHER	1			
31	31062	162		PRE-COAT LOCK BOLT	1			
32	91049	138		CONNECTOR	1			
33	31034	193		PIN-CONNECTOR	1			
34	31057	275		BOLT M12X40-P1.5	1			
35	31058	177		NUT	1			
36	51107	103		LOCK NUT	1			
37	220B	2022		O-RING	1			
38	11041	123		PLÜNGER	1			
39	11122	122	17	FLANGE	1			
40	214B	6300		O-RING	1			
41	76007	199		BUSH	2			
42	11092	124		GUIDE C.P	1			
43	214B	3400		O-RING	1			
44	76007	200		BUSH	1			
45	36072	108		U-PACKING	1			
46	61002	157		OIL SEAL	1			
47	68055	153		JOINT	1			
48	11102	230	17	HOLDER	1			
49	76007	201		BUSH	1			
50	76007	202		BUSH	1			
51	76007	203		BUSH	1			

**PARTS LIST**  
MODEL:VH522-31,32,33

REF. No.	PARTS NO.		PARTS NAME	Q'TY		PRICE(¥)	2/3	Jun.2007
				INCLUDING			RECOMM.(%) Lot.100	REMARKS
52	76007	204	BUSH	1				
53	61002	203	OIL SEAL	2				
54	91031	102	NIPPLE-GREASE	2				
55	61023	198	SLEEVE	1				
56	68036	301	WASHER	3				
57	68036	259	WASHER	1				
58	11086	199	STOPPER	1				
59	214B	3200	O-RING	1				
60	51088	105	SLIDE METAL	1				
61	91038	124	GRIP	1				
62	31034	194	PIN-BRACKET	1				
63	51022	174	BRACKET	2				
64	11024	151 09	STAND	1				
65	51022	183	BRACKET	1				
66	31058	178	NUT	1				
67	76007	205	BUSH	1				
68	31039	142	STUD BOLT	1				
69	68013	396	SPRING	2				
70	31058	179	NUT	2				
71	11102	231	HOLDER	1				
72	31058	180	NUT	1				
73	36121	105	BACKUP RING	2				
74	91073	105	SNAP RING	1				
75	36064	108	BELLOW-RUBBER	2				
76	68036	274	WASHER	1				
77	563L	0800	U-CAP NUT	1				
78	51090	134	PROTECTOR	1				
79	68036	251	WASHER	3				
80	71112	116 09	HANDLE C.P	1				
81	71203	140 09	ARM C.P	1				
82	11011	121	CLAMP	1				
83	68028	103	WIRE BAND	2				
84	71056	247	THROTTLE LEVER A/C	1				
85	71148	158	STOP SWITCH A/C	1				
86	41003	194	TUBE	1				
87	91001	320	THROTTLE LEVER WIRE	1				
88	31062	180	PRE-COAT LOCK BOLT	3				
89	31062	155	PRE-COAT LOCK BOLT	12				
90	31062	157	PRE-COAT LOCK BOLT	9				
91	31062	161	PRE-COAT LOCK BOLT	1				
92	31062	163	PRE-COAT LOCK BOLT	3				
93	31062	167	PRE-COAT LOCK BOLT	5				
94	31062	162	PRE-COAT LOCK BOLT	4				
95	31062	179	PRE-COAT LOCK BOLT	2				
96	811V	3000	C-SNAP RING	1				
97	812V	1500	C-SNAP RING	1				
98	812V	1400	C-SNAP RING	2				
99	812V	1200	C-SNAP RING	3				
100	813V	4200	C-SNAP RING	1				
101	71311	106	ROD C.P	1				
102	98003	142	MAIN PIPE	1				
103	98012	249	JOINT	1				
104	51044	149	HOOK	1				

